

DO NOT SCALE

This drawing has been produced by Dorman Long Technology in accordance with the instructions of the client for their sole and specific use.

Dorman Long Technology shall not be liable for the use of any information contained on this drawing for any purpose other than that for which it was specifically prepared and provided.

Should there be any doubt regarding the interpretation of any information given on this drawing, enquiries should be directed to Dorman Long Technology at the address given below before executing such part of the works.

Copyright © Dorman Long Technology

NOTES

SPECIFICATION

DL-CP750 PINNED CLIMBING JACK

SAFE WORKING LOAD (SWL) (PUSH / PULL)	750 / 470 METRIC TONNES
JACK TEST LOAD (1.25 X SWL) (PUSH / PULL)	938 / 588 METRIC TONNES
CLOSED LENGTH (PIN CENTRES)	2815 mm
OVERALL CLOSED LENGTH (EXCLUDING REMOVABLE LUGS)	3790 mm
STROKE	1025 mm
OPERATING TEMPERATURE	-20 to +40 °C
MAX FULLY EQUIPPED JACK WEIGHT	10280 kg.

DL-CY375/235.5-1025-279 MAIN CYLINDER (2 No. PER CLIMBING JACK)

SAFE WORKING LOAD (SWL) (PUSH / PULL)	375 / 235 METRIC TONNES
WORKING PRESSURE (PUSH / PULL)	279 BAR
SEALING TEST PRESSURE (1.5 x WORKING PRESSURE) (PUSH / PULL AT END OF STROKE)	419 BAR
CYLINDER CLOSED LENGTH	1675 mm
STROKE	1025 mm
OPERATING TEMPERATURE	-20 to +40 °C
MAIN CYLINDER WEIGHT	2020 kg

DL-CP750 x 5700 CLIMBING BAR

SAFE WORKING LOAD (SWL) (COMPRESSION)	750 METRIC TONNES
OVERALL LENGTH (EACH)	5700 mm
OPERATING TEMP	-20 to +45 °C
WEIGHT (EACH)	5215 kg

Dorman Long Technology
 The Charles Parker Building,
 Midland Road, Higham Ferrers,
 Northamptonshire, NN10 8DN
 United Kingdom
 Tel: +44 (0) 1933 319133
 Fax: +44 (0) 1933 319135
 www.dormanlongtechnology.com

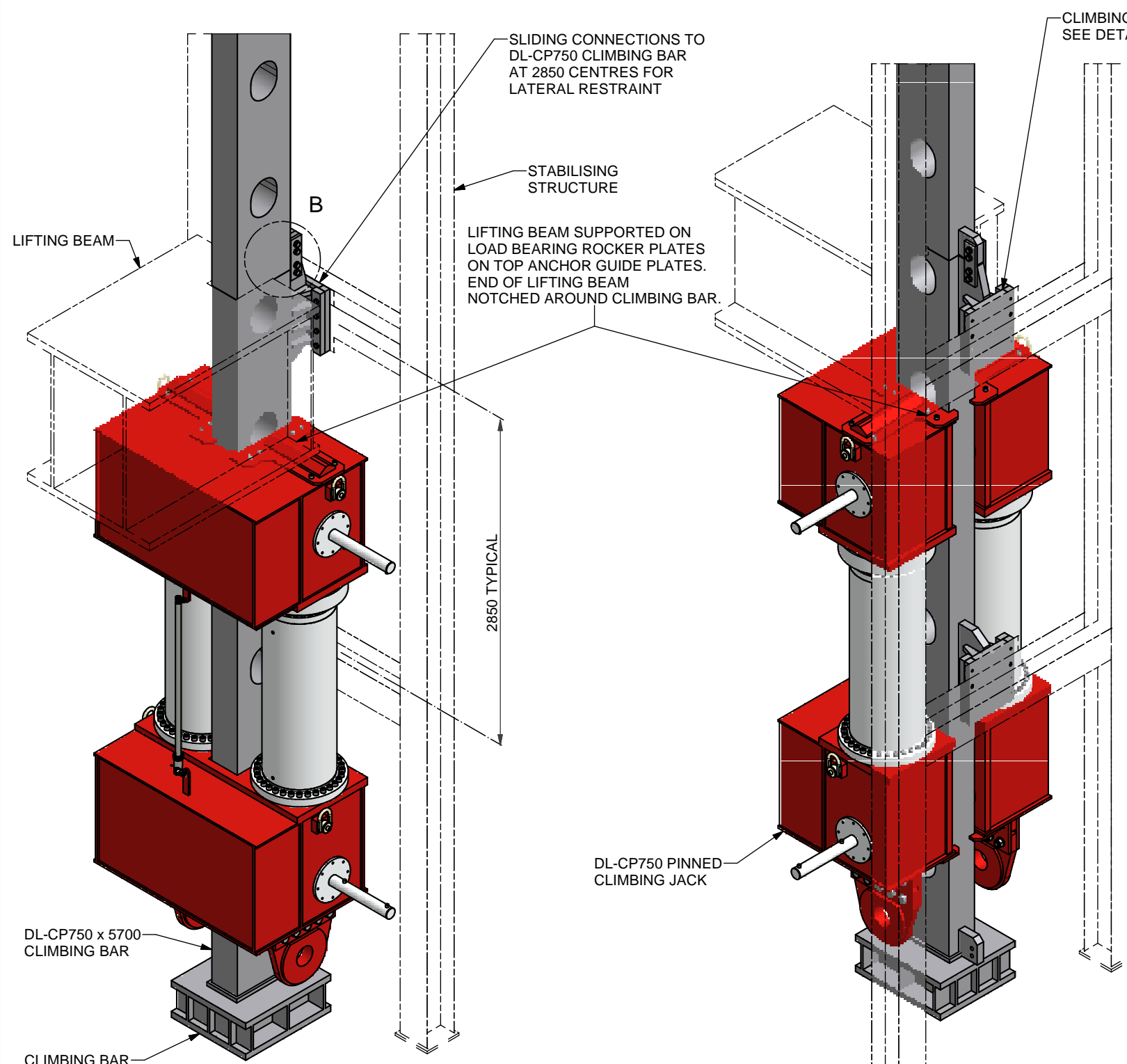
Project
DL-CP750 PINNED CLIMBING JACK SYSTEM

Drawing Title
**DL-CP750 PINNED CLIMBING JACK
 DL-CP750 x 5700 CLIMBING BAR
 GENERAL ARRANGEMENT**

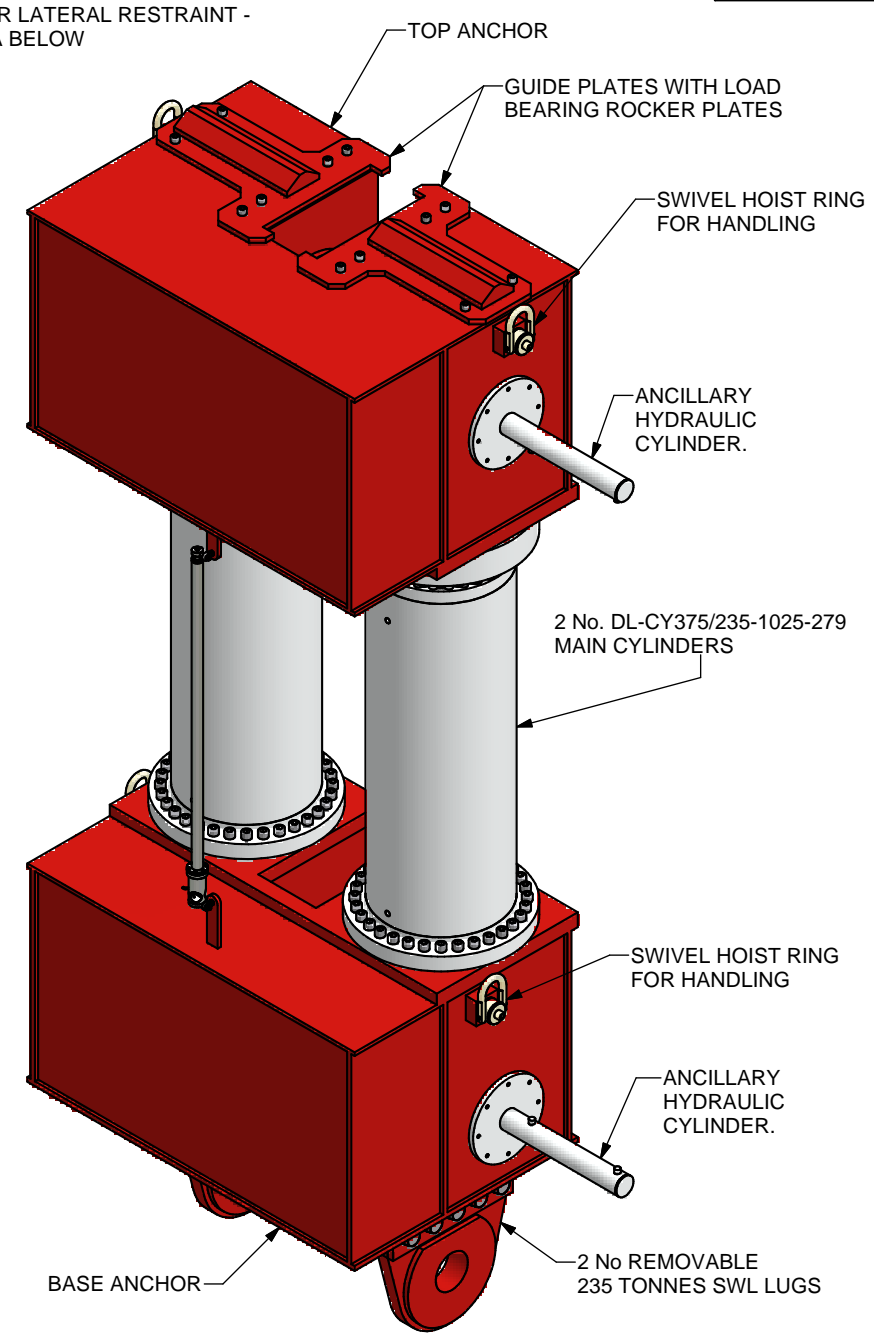
Scales (At A3) AS SHOWN	Design Eng: JM	Checking Eng: SAB
	Drawn by: SG	Project Eng: SAB

INFORMATION

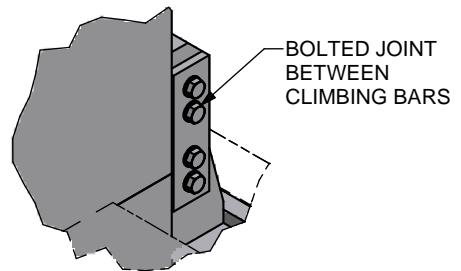
Original Drawing size: A3
 Drawing No. **DL-CP750-010-01** Rev. **A**



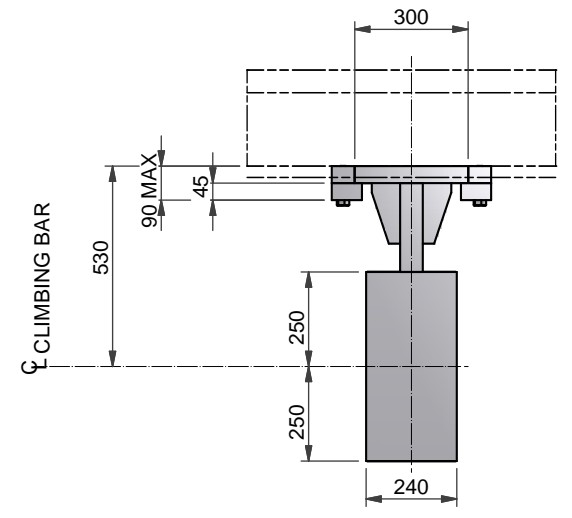
TYPICAL LIFTING ARRANGEMENT



DL-CP750 PINNED CLIMBING JACK



DETAIL B



**DETAIL A
 CLIMBING BAR LATERAL RESTRAINT DETAIL
 (1 : 20)**

